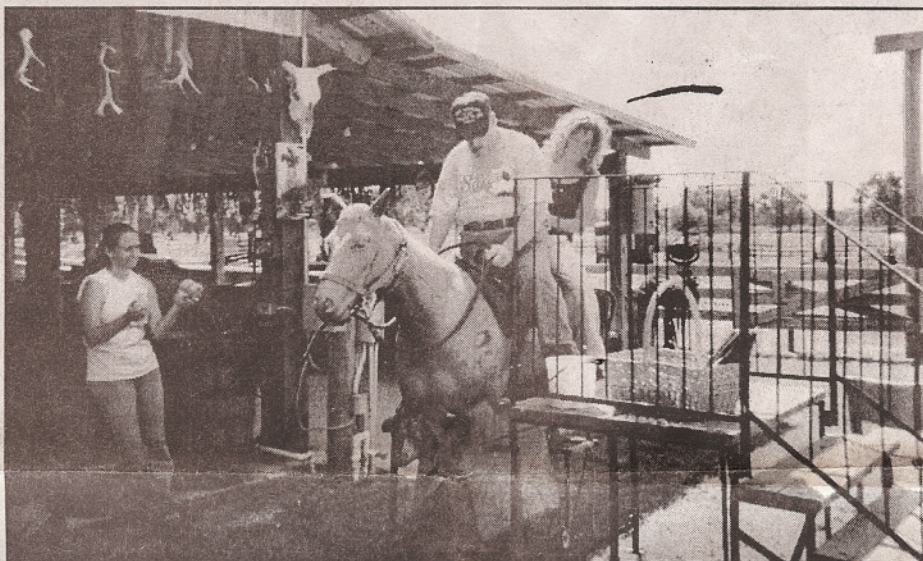
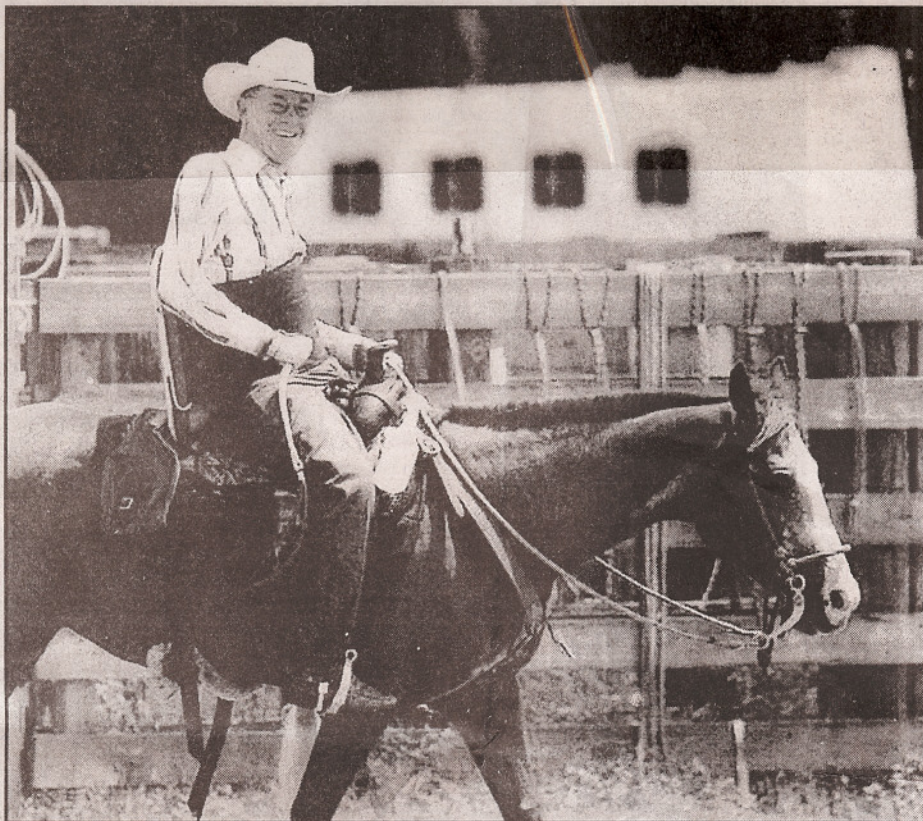


THERAPEUTIC RIDING

The special riding program at Reality Ranch about three miles east of Zolfo Springs off SR 66 is growing. Begun in 1998, it provides training for the mentally and physically challenged and at-risk kids weekly with the support of the local Kiwanis Club and a host of individuals and churches. In top photo, director Randy Johnson, the disabled founder of Reality Ranch, enjoys the benefits and freedom of therapeutic riding with the aid of a custom-built saddle. In middle photo, Keith Palmer learns the skills for proper body alignment to achieve the balance needed for riding. Behind him, therapeutic riding instructor Sissy Taylor works with Palmer to improve his posture and correct hand and body positions. At left, college student Heather Emory has started as a volunteer and is an instructor trainee. In lower photo, riders, volunteers and instructors pause for a picture at a recent horse day. For more information, call Johnson at 735-8600 or 767-8841.

COURTESY PHOTOS



yl

rsold

oor, Rear

#06349G

AS \$12,

2,2

luminum V

ed Mat, Tra

tk#06341C

VAS \$16

\$3,0

coln Townc

Thursday, November 9, 2006

RODEO KID



COURTESY PHOTO

Youngsters of all ages help with the rodeos held at Reality Ranch. Tanner Burdette brings in an animal for the goat-tying competition. Other events for youth up to age 17 are mutton busting, barrel racing, pole bending, bronc riding, steer riding and calf roping. The next rodeo at the ranch nearly three miles east of Zolfo Springs on SR 66 is tomorrow (Friday) at 7 p.m. During intermission Frank and Peggy Giblin will perform cowboy poetry and music. Concessions will be open. Admission is free. For more information, call Randy Johnson at 735-8600.